

Flowing Wells High School - Math Department
STUDENT EXPECTANCY SHEET

Course: Algebra 1

School Year: 2018 - 2019

Teacher: Mr. Greg Wenneborg

Room: D11

Phone: 520-696-8132

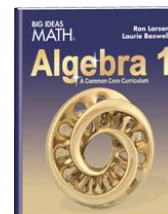
Email: gregory.wenneborg@fwusd.org

Website: www.mathwithborg.weebly.com

What do I need to bring every day?

Textbook: Algebra 1, A Common Core Curriculum, by Larson and Boswell.

This textbook is available in the bookstore. Students, not teachers, are financially responsible for the books they are issued. You should never leave any books in a classroom.



Additional Required Materials: (1) 3-Ring binder with dividers and paper
(2) Pencil and eraser



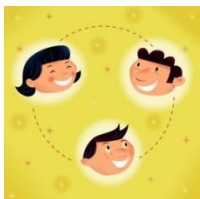
What am I going to learn?

This class is a comprehensive program in first year algebra. It is designed for students who are ready for algebraic principles and reasoning with an emphasis on problem solving and critical thinking.

Semester I: August 7 - December 18	Semester II: January 5 - May 21
Chapter 1: Solving Linear Equations	Chapter 7: Polynomial Equations and Factoring
Chapter 2: Solving Linear Inequalities	Chapter 8: Graphing Quadratic Equations
Chapter 3: Graphing Linear Functions	Chapter 9: Solving Quadratic Equations
Chapter 4: Writing Linear Functions	Chapter 10: Radical Functions and Equations
Chapter 5: Solving Systems of Linear Equations	Chapter 11: Data Analysis and Displays
Chapter 6: Exponential Functions	

What will we be doing in class?

1. Learning and Doing - You will be expected to actively participate in and contribute to your group.
2. Testing - will aid in determining your progress. This will be done approximately every two weeks. You are expected to be prepared for exams, and therefore retests are NOT permitted.
3. Quizzes - will usually be given halfway through each chapter to provide review and practice.
4. **Problem Based Tasks** - You will be using your problem solving skills to solve multi-faceted real life problems in a testing situation.
5. Notebooks -- assignments will be made after each new lesson. It is **ABSOLUTELY** critical that all assignments be completed for the next class period. **Failure to complete assignments is the greatest cause of math failure.** Assignments will be kept in your notebook, along with bellwork, notes, and handouts.



How will I be evaluated?

District Grading Scale Policy

A = 100% - 90%
B = 89% - 80%
C = 79% - 70%
D = 69% - 60%
F = 59% - 0%

Nine-week Grade

Tests = 60%
Assignments = 20%
Bellwork = 10%
Quizzes = 10%

Semester Grade

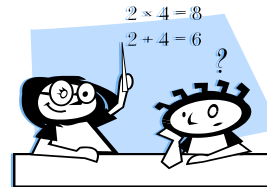
First nine-week grade = 40%
Second nine-week grade = 40%
Semester Exam = 20%

How and when will I know my grade?

You will be kept informed regularly throughout the grading period about your progress in class. An update on grades will be produced weekly and given to you. You are also able to access your grade online through Powerschool. You are encouraged to share this information with your parents. If your parents have any concerns or questions, please have them contact me via email or phone.

What should I do if I need help?

I will be available before school, at lunch, and after school (D11).



What does Mr. Wenneborg expect me to do?

1. Respect

*All school rules

- no food or drink, except water
- follow the dress code
- turn off your cell phone during class - no hats in the classroom

*Mr. Wenneborg

- follow directions
- sharpen pencils and throw away trash during individual time

*Your peers

- listen when others are speaking
- keep conversations to your table when working in a group

*Classroom materials

- use care when handling all materials
- you are financially responsible for the book you are issued

2. Try

*Bring your materials to class every day

*Stay on task



What happens if I choose to break a rule?

1st Consequence - Warning
2nd Consequence - Lunch Detention
3rd Consequence - Parent Contact
4th Consequence - Referral to
Assistant Principal

What happens if I choose to follow the rules?

1. Educational success.
2. Positive comments.
3. Notes sent home to parents.

Cell Phone Policy - The Flowing Wells High School Cell Phone Policy will be strictly enforced. Please turn off all cell phones while in class unless our activity calls for use of a phone.

What should I do if I am . . . ?

Tardy without a pass:

1st through 4th tardy - lunch detention

5th tardy⁺ - lunch detention and referral to the attendance office.

Absent

You are expected to attend class regularly in order to experience success. Unexcused absences will result in zero credit. The procedures for make-up work are:

1. Assignments must be made-up within the allotted number of days (the number of days that you were absent plus one) in order to receive credit.
2. Make-up work and tests that will be missed due to pre-planned absences, such as field trips, must be obtained **before** the absence.
3. Assignments are listed on the calendar posted in the classroom.
4. When you return from an absence, you may take needed worksheets and test reviews from the back of the class.
5. If you are absent for a test, you need to come to tutoring to make-up the test. Make-up tests are MORE difficult than the original. You have one week to make up a test from the date the test was given. If you do not meet this requirement, a 5% per day penalty will be subtracted from your test grade.
6. Bellwork is part of your participation grade, as well as a device to encourage you to be on time to class. Therefore, bellwork can NOT be made-up.

Please sign and return

Dear Mr. Wenneborg,

We have read the requirements and expectations for your Algebra 1-2 class.

Student Signature

Parent Signature

Please write any comments/concerns below.